



The Voice for Illinois Forests

To act on issues that impact rural and community forests and to promote forestry in Illinois

****IFA Officers****

President

J. B. Gates
rjbgate@hamiltoncom.net

Vice President

John E. Gunter
jegunter40@frontier.net

Secretary

Dave Gillespie
dandgisp@aol.com

Treasurer

Mike McMahan
banberry@htc.net

****Inside this Issue****

President Message	1
Secretary Report	2
CWM Software	2
Annual Meeting Highlights	3
Region News	5
EQIP & IL Forestry	8
Web Soil Survey	9
...and more	

IFA Web site

www.ilforestry.org

Message from the President

J.B.Gates (Sawdust)

The annual meeting was very good. If you missed it, you missed a great program. Thanks to the committee for the excellent job in planning for us. You have elected some wonderful officers again for the ensuing year. You will see elsewhere in this newsletter a list of officers and directors. This core team however, needs your help. There are several positions open on various teams that you could help work on. Give the team director a call and volunteer.

I prefer to call the various committees as 'teams.' It seems committees meet and then do not do anything. A team has a goal and they achieve that objective in an efficient manner. I encourage you to be a part of a team. Remember, we are all needed to make a difference in the objectives of the Illinois Forestry Association. It is a team effort and it takes all the team to make changes.

Elections have come and gone. History has been made, so now it's time to get down to work and move the agenda of Illinois Forestry in the - soon to be formed - legislature. I hope each of you contact your Representatives and Senators and let them know your thoughts, both positive and negative. You know how you like to get a pat on the back when you accomplish something. I once heard, to get anything accomplished in the legislature, 10 or more calls or letters have to be received by the legislator. Do your part.

One of the initiatives that are going to be pushed this year is to form sub-regions within the various regions. This is to accommodate you, the member, by reducing your driving time and also developing more relationships with your neighbors. This will be done by forming several counties into a small group. If you are willing to help in forming such a group, please give your director a call. Their numbers are listed elsewhere in this publication. On that same note, if you have a topic you would like to have presented in a workshop or conference setting, again please call your directors. We are a grass roots association; we would like to have your input as well as help. Be like a branch that puts out many leaves.

Another project we will be concentrating on this year is membership growth and development. We are going on six years as an association and we need to expand our base. If you have suggestions please call the membership team leader, Mr. John G. Gunter.

Mr. Ray Herman has again taken on the task of being the team leader for publications – he would appreciate hearing from you with both articles and suggestions. Maybe you have a knack for writing or publication design – give Mr. Herman a call and offer to help. Maybe you are doing something unique on your timberlands; let it be known- share your experiences with others. Even if it is just one or two paragraphs it might be just what another member is looking for.

Take the time to visit our web-site. You can find it at <http://ilforestry.org>; there is a LOT of useful information for you.

Dates of various activities are located in the calendar, make plans to attend and participate in the associations events. If you know of an event you think would be of interest to our members, let it be known by a phone call, email or letter.

Calendar of Events		
	<i>November,</i>	
	<i>December,</i>	
	<i>January</i>	

December 9

IFA Board meeting
Springfield, IL
Contact: Dave Gillespie
dandgisp@aol.com

January 15

Timber Tax Workshop
Contact: Dan Schmoker,
schmoker3@aol.com

January 28

IFA Board meeting
NRCS State Office
Champaign, IL
Contact: Dave Gillespie
dandgisp@aol.com

February 19-20 & March 19-20

Chain Saw Safety
Contact: John Torbert
309-337-0879

February 26

Maple Syrup Demonstration
Contact: Dan Schmoker,
schmoker3@aol.com

February 25-26 & March 11-12

Chain Saw Safety
Contact: Tom Beyers
618-267-8900

March 25

IFA Board meeting
Location - TBA

Message from the Secretary

Dave Gillespie

It's time for IFA dues notices to go out for 2011. Sherry Finn, AISWCD state office in Springfield, and I have been working on this project. It's not an easy task making 700 copies of the notice (many of you have already paid your dues for 2011), making the address labels, folding the notices, folding the return envelopes, addressing and stuffing the envelopes, running the envelopes through the postage meter, and then taking the boxes of envelopes to the post office.

However, it's worth the effort! The support of all the IFA members is essential to the great work the IFA has accomplished, and is planning to do in 2011. The Board of Directors and committees are now at work planning a budget for 2011, plus a Plan of Work that will keep our organization on course this coming year.

So, when you get your notice for 2011, please return your dues in the enclosed envelope as soon as you can. Your support is vital, and much appreciated. Also, don't forget to donate to the Bob Sloan Scholarship fund. Bob was a great person, and one of the best supporters of forestry in our state.

Contact me if you have any questions or concerns.

Woodland Inventory

Carl Mize – CWM Software

By Kurt Bobsin, IFA Technical Advisor

A woodland inventory gathers information about the woodland. The information can help you understand the present condition and be used to estimate the future of woodland. A woodland inventory involves measuring a sample of trees to estimate the number of board feet, cords, and dollars per acre. The inventory is not complicated to do but requires some training, going to the forest to measure trees, and converting tree measurements into board feet and dollar values.

Outgoing Directors

IFA had to replace a lot of leadership this past year, as all regions lost directors. We owe a debt of gratitude to the following:

Mark Duntemann	Region 1
Susan Romano	Region 2
Mike Medley	Region 3
John Gunter	Region 4
Joe Newcomb	Region 4
Paul Diezman	Director-At-Large

Thanks to all for your years of dedication in promoting your association!

ATTENTION CHAIN SAW USERS!!

The Game of Logging Chain Saw Safety course is looking for students. Two courses are planned, depending on enrollment.

February 19-10 & March 19-20, 2011:

Call John Torbert at 309-337-0879 for the course in northwest Illinois.

February 25-26 & March 11-12, 2011:

Call Tom Beyers at 618-267-8900 for the course in Marion County.

This is to help organizers solidify these late winter-early spring training sessions.

The calculations needed to analyze your measurements are not complicated, but they are repetitive and error prone. An easier way to do the calculations, and much more, is to use Illinois TIGER for Woodlands and Compartments (TIGER WC). It's a computer program that woodland owners, consultants, and others can use to estimate the present condition of a woodland. It estimates the volume and value per acre for pulpwood, sawtimber, and veneer by species and for all species combined.

CWM continued on page 8

IFA Annual Meeting Highlights

Susan Romano and Lee Rife, directors in Region 3, planned and organized the 4th annual IFA meeting held September 25th in East Peoria. The meeting was held in conjunction with members of the American Society of Professional Foresters. IFA members in attendance totaled 46.

The following is a sketchy overview of some of the business portion of the meeting and the afternoon speakers.

One of the primary events that took place at the annual IFA meeting was the election of new officers, Regional directors, and directors at large.



Your IFA Officers - from left to right: (seated) Ray Herman, Dan Schmoker (1st row) Mike McMahan, Dave Gillespie, Lee Rife, J.B. Gates, Roy Bailey, John Gunter; (back row) Jim Kirkland, Dick Pouzar, Stan Sipp.
Not pictured: Jay Markuson, John Groninger, Wes Beyers

After election of officers, lengthy discussions occurred over the misuse of the 4 percent timber tax, IFA's Freedom of Information request that has not been properly answered, and IDNR's laxness in reestablishing the Illinois Forestry Development Council (IFDC). These issues will not be left unanswered, even though the board's efforts seem futile. Your new board will continue to address these issues for the Association.

List of all officers and directors:

Officers

J. B. Gates – President
John Gunter* - Vice President
Mike McMahan* - Treasurer
Dave Gillespie – Secretary

Directors

Region 1 – Jay Markuson, Dick Pouzar*
Region 2 – Lee Rife, Dan Schmoker*
Region 3 – Ray Herman*, Roy Bailey
Region 4 – Jim Kirkland*, John Groninger*

Directors At Large

Stan Sipp and Wes Beyers*

*-Indicates individuals new in their board positions. Most of your IFA board members are identified in the picture below.

IFA Technical Advisors

Kurt Bobsin

IDNR -Forestry Regions III-IV
217-935-6860 (office)
kurt.bobsin@illinois.gov

Jay Hayek

University of Illinois
217-244-0534 (office)
jhayek@uiuc.edu

Wade Conn

State Forester, USDA-NRCS
217-353-6647 (office)
wade.conn@il.usda.gov

Paul Deizman

IDNR
217-782-3376 (office)
paul.deizman@illinois.gov

IFA Staff

Sherry Finn

AISWCD
217-744-3414 (office)
sherry.finn@aiswcd.org

Paula Purdue

Jenni Purdue

Legislative & Political
Consultant
217-525-8434 (office)
paula@youradvocates.net
jenni@youradvocates.net

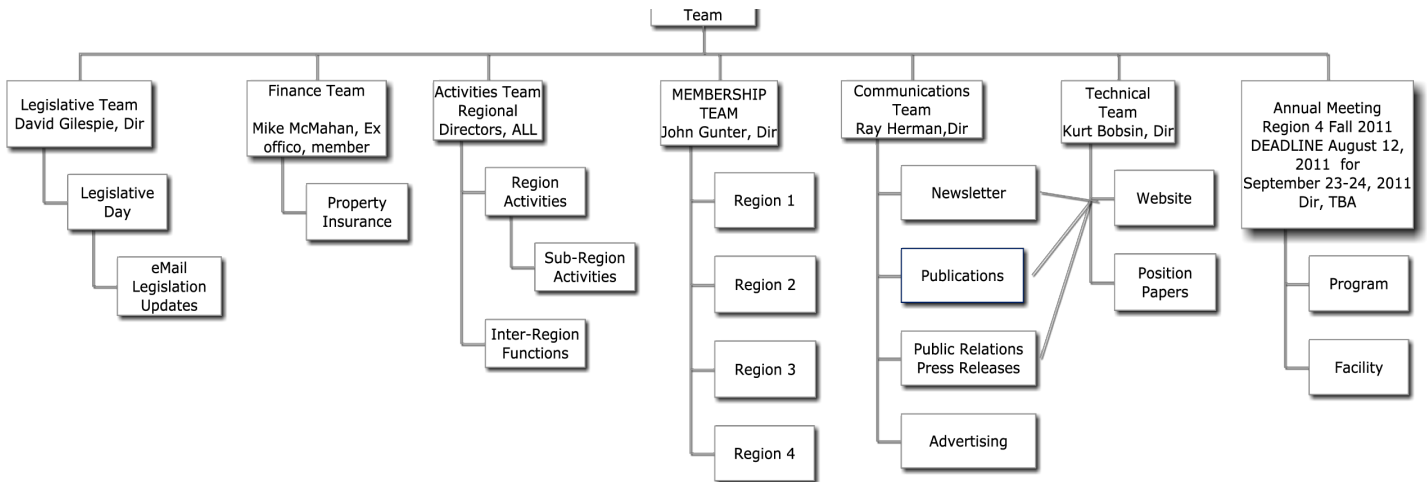
**Do you have a passion
for trees and forestry?**

**Are you interested in
serving on a regional
committee?**

**Contact an IFA officer
today to find out how
you can help!**

Highlights continued on page 4

IFA Organization Chart



Annual Meeting continued from page 3

Paula Purdue, our lobbyist, gave a great overview of the state of the political scene. Definitely, natural resources and staffing does not rank high with the current budget deficit. IFA, through the efforts of the Legislative Committee and Paula, is becoming better known.

After lunch, Paula introduced Senator David Koehler from Peoria, who spoke more about the state's budgetary dilemma and the lack of unity on solutions that most likely will require a tax increase, although no one wants their name tied to it in an election year. He responded very well to lots of questions.

The rest of the afternoon was devoted to three presentations. The first one was on Woodland Liability Insurance. This was followed by a very enlightening and descriptive presentation on assessing and dealing with high risk trees in the urban setting, by Mark Duntemann, outgoing Region 1 Director. The last speaker was Jim Kirkland, Region 4 Director and manager of the Forest Resource Center (FRC) at Dixon Springs Experiment Station. He outlined his career and capabilities that give him the skills needed to run the center effectively. The FRC should provide a big boost for the forest resources of Southern Illinois.



Dave Gillespie, IFA Legislative Team Director, introduces Paula Purdue for the legislative update.



State Senator David Koehler addresses the participants at the IFA meeting.



Out-going Director, Susan Romano registers Region 3 Director, Roy Bailey.



Jim Kirkland, Interim Director, Illinois Forest Resource Center at Dixon Springs Agricultural Center, receives a wood bowl from J.B. Gates and Dan Schmoker.

Region 1

Directors

Jay Markuson	Dick Pouzar
2N 158 Saddlewood Dr.	2303 W. Cording Rd
Maple park, IL 60151	Galena, IL 61036
630-365-5392- Home	815-777-8157- Home
630-751-5780 -cell	pouzar@yahoo.com
jmalm1@att.net	

Contact us anytime with questions, suggestions and assistance needs.

Thank You! Mark Duntemann

Outgoing Region 1 Director Mark Duntemann deserves our thanks for his work the past couple of years. He not only organized events in our northern region, but also brought his expertise in urban forestry to both the board of directors and the larger IFA. His presentation at the annual meeting on hazard trees applied to both urban settings and forestland. We appreciate his efforts and hope he stays active in the IFA.

Fall Events

An interesting forest tour was conducted by the Northwest Illinois Forestry Association (NIFA) on Saturday, November 13. Consulting forester Kevin Oetken led a walk and discussed improvements that have occurred in Schurmeier Forest over the last 12 years. In 1998, Kevin was contracted by NIFA for crop tree release, coppicing, and planting more desirable species in 11 acres of this mature oak-hickory upland forest. The other 41 acres of Schurmeier Forest was left untouched. In 2005, Kevin's crew re-visited the 11 acres, improving conditions for the crop trees. This forest walk compared the managed acres to the unmanaged acreage. Schurmeier Forest is being managed for three objectives: to improve the quality of the timber, to improve wildlife habitat, and to preserve native plants.

Similarly, the DuPage County Forest Preserve District held a free "Introduction to Prescription Burns" on November 7th. The Forest Preserve staff discussed their prescription-burn program and exhibited a burn in progress. Experienced staff members were available to answer questions.

We notified IFA members by email of these two events, because the newsletter schedule did not match the tour schedule. In the future, if our region's members would like to learn of late-breaking events or news interim to newsletter publications, please supply us with your email address.

Send it to pouzar@yahoo.com. We promise to use it only to facilitate IFA communication and not to provide it to any outside organization.

Member Communication Update

We have been canvassing members in Region 1 for a couple of reasons - to find out if your land is in a different county from your residence and to determine your information needs. This canvassing has been done by email because postal service mail is costly and time-consuming to stuff, and postcard messages are too small for complex questions. So we have been trying to increase the number of members to whom we can communicate by email. In the future, we intend to continue discovering your needs, notifying you of upcoming events, and providing news and information all using email. If you don't have email, we will still update you on happenings in our region through the quarterly newsletter.

Publications

Members also received a USDA Forest Service brochure by email entitled "The USDA Farm Bill: What is in it for Woodland Owners". It describes the various federal cost-share programs as well as the application process with handy charts to help you determine which programs might apply to you and your land. If you don't have email, you can probably obtain a copy at your local FSA/ NRCS Service Center. Unfortunately, we do not have the resources to print and mail copies of this brochure.

Members received a USDA Forest Service publication by email entitled "Tax Tips for Forest Landowners for 2010". It discusses tax treatment of these items: timber sales, timber management expenses, reforestation costs, depreciation and first year expensing, cost share payments, and casualty and theft losses. Members in Region 1 without email but would like a copy, drop Dick Pouzar a postcard and he'll get one out to you in the mail.

Safety TIPS

When I went to my chain saw retailer to purchase a new chain the owner of Main Street Shop offered this safety tip : always have a whistle on a lanyard with you when you start cutting. The reason is whistle can be heard over a chain saw and if you should ever need it the lanyard can be used to stop blood flow. He also gave the association a bright cap for the annual meeting. Thanks to Jerome for this tip and the cap.

Region 2

Directors

Lee Rife
124 Basswood Road
217-529-9498 – Home
217-562-2634 – Cell
rife@springnet.com

Dan Schmoker
#5 Greencastle Circle
Springfield, IL 62443
217-529-0061 – Home
217-416-1587 – Cell
schmoker3@aol.com

Contact us anytime with questions, suggestions and assistance needs.

Events Planned for 2011 - Mark Your Calendars!!

Your Region 2 directors have spent time planning a number of events for 2011. Please mark your calendars with the following:

January 15 - It is tax time and we plan a "Timber Tax Workshop". If you have harvested timber or are planning to harvest in the next few years, you really need to attend. What are the new rules and regulations from the Internal Revenue Service concerning income from a tree harvest? How can you plan to minimize taxes on revenue from a timber harvest?

February 26 - Maple Syrup Demonstration – We are working with Funk's Grove at Shirley, IL to have a demonstration of making maple syrup, plus take part in a number of other activities at their nature center. This should be a fun event for the whole family.

May 14 – Tree Identification Workshop – Another fun event for the entire family. Also, bring friends and neighbors who might be interested in forestry.

August 20 – Landowners Liability workshop – Are you protected from hazards in or on your woodlands? What about trespassers who cross your property with an ATV and are caught by a cable you put across a seldom used dirt lane to keep them out? All of us have hazards out there. How do we recognize them and protect ourselves from lawsuits?

November 5 – Invasive Species workshop – Japanese Honeysuckle, Garlic Mustard, Kudzu and a host of other imported, exotic plants are a threat to your woodlands. How to identify and control these pests will be the subject of this one day event.

Region 3

Directors

Ray Herman
154 Lake Road
Seymore, IL 61875
217-687-2712 – Home
217-377-7568 – Cell
brherman@gmail.com

Roy Bailey
8479 E. 250th Ave.
Mason, IL 62443
618-238-4863 – Home
217-343-3574 – Cell
baileytrees@frontiernet.net

Director at Large

Stan Sipp
211 E. Illinois, Box 111
Mansfield, IL 61854
217-489-9003 – Home
217-714-1855 – Cell
sksipp@uiuc.edu

Contact us anytime with questions, suggestions and assistance needs.

Directors elected at the annual meeting:

Roy Bailey – 2 year term
Ray Herman – 1 year term

Region News:

Joint IFA/Tree Farm field day October 2 at Tony Kreke's farm was a big success.

Director, Ray Herman, represented IFA at Eastern Illinois University's meeting announcing plans to use woody bio-mass at next April's start-up of their nearly constructed bio-mass field plant. Hopefully, wood chips would be provided from local sources within about a 30 mile radius of the plant.

The Lincoln Heritage RC&D is beginning to assemble a service provider publication of the six (6) county RC&D. The RC&D includes the counties of Edgar, Cumberland, Douglas, Coles, Champaign, and Vermilion. Local District Forester Bob Wagner, along with the local SWCD's and others, will help provide this county-by-county data source for all woodland owners. This effort is the first step for IFA and others to develop a state-wide, county-by-county forest resource service provider listing

Member News:

(Member names underlined.)

Jake Hendee, forestry graduate student, assisted Ray Herman in doing TSI and invasive exotic removal on about 8-9 acres of Herman, Herman & Sons woodland. Ray and family members have a 115 acre EQIP contract to improve, based on their forest management plan. Shane McDearmon, district forester, helped mark some of the areas worked and is providing technical oversight.

Justin Adams, consulting forester, recently completed TSI work on an EQIP contract for Rich Tucker in Crawford County.

Ray Herman provided seeds to a local planter, Jerry Heinz, for a 20 acre direct seeding of a riparian site planned by Champaign County SWCD staff for landowner Larry Zahnd. Watch for the article in Farm Journal magazine.

More Region 3 Member News

Mike Billman, a Clark County woodland owner and a forester working in Oregon, was featured in a news article highlighting his work in getting a grant and providing leadership for a wood pelleting plant that will soon start production.



Mike Billman of Malheur Lumber Company stand in front of pellet plant that nears completion on John Day, Oregon.

Our Forestry Association teamed up with the Southern Illinois Tree Farm Committee on October 2 to sponsor a field day at the Tony and Jill Krete Tree Farm southeast of Effingham. The day began with a mushroom presentation that was accompanied by an off-script rain shower.

Mushroom expert Joe McFarland assessed fall specimens brought by visitors to the 120-acre Kreke farm. Joe autographed copies of his new book, "Edible Wild Mushrooms of Illinois and Surrounding States" after explaining relationships between tree and mushroom growth. Joe is also a staff writer for "Outdoor Illinois".

District Forester Shane McDearmon joined timberman Ryan Dust and visitors for a hike to the Kreke woods. Ryan and Shane evaluated multiple trees for market potential, pointing out features that affect value. The woodsmen discussed a limited harvest thinning that would stimulate increased growth of remaining trees. Tony Kreke will be cutting some hickories and processing them into flooring at his own mill.

USDA-NRCS District Conservationist Bart Pals of Effingham visited with the 90 participants regarding USDA programs that offer monetary incentives for landowners to apply forestry management practices. Bart credited local private foresters for their work to get landowners

to improve their woodlands with timber stand improvement projects, exotic species controls and tree planting. Effingham County is one of the most active Illinois counties for application of woodland practices.

Illinois Forestry Association Region 3 Director Roy Bailey led a discussion of problems with exotic woody plants that invade woodlands. A display provided examples of the most common exotics like shrub honeysuckle and autumn olive. Alternative control measures include controlled burning, cut and treat stumps, and foliar application of herbicides. A history of good woodland management has limited invasive establishment on the Kreke Farm.

IDOC specialist Mary Grapperhaus supplied extensive displays and served as Master of Ceremonies for the field day. Speakers and workers are both Tree Farmers and IFA members. The Krekes are charter IFA members and very active in tree farming.

Region 4

Directors

Jim Kirkland
1259 Fritts Rd.
Stonefort, IL 62987
618-695-3383 – Home
618-994-4006 – Cell
1984kirk@gmail.com

John Groninger
1205 Lincoln Dr., Mail Code 4411
Carbondale, IL 62901
618-453-7462 - Home
618-967-7318- Cell
groninge@siu.edu

Director at Large

Wes Beyers
1868 Ferrydale Rd.
Odin, IL 62870
618-775-6521 – Home
618-339-0927 – Cell
wesbeyers@yahoo.com

Contact us anytime with questions, suggestions and assistance needs.



Meet John Groninger

I have been a faculty member with the Department of Forestry at Southern Illinois University since 1997 where my primary focus is teaching courses in Silviculture, Agroforestry and Urban Forestry. I also conduct research in natural and planted forests of southern

Illinois with the goal of improving reforestation success and sustaining production of forest resources. I live in Murphysboro with my wife Elaine and daughters Molly, Liesl and Jessie. Over the next several months I plan to divide my time between Illinois and Afghanistan, where I am working with the U.S. military and other personnel to help restore forest cover and rehabilitate watersheds. This has been both very difficult and rewarding and helps me put our forestry problems in perspective. I look forward to meeting forest landowners throughout Region 4 and sharing ideas on how we can more effectively work together to maintain and improve management of our forests here in Illinois.

Region 4 Report continued on page 8

Region 4 Report Continued

Jim Kirkland, Region 4 Director, wants to thank the IFA for the \$3000 contribution to directly support the Illinois Forest Resource Center (IFRC). These funds will be used to support the activities of the IFRC and will allow me to plan for some training sessions around the region. Workshop ideas include tree pruning and care, risk tree evaluation and management, skidder operation and chain saw safety. Please contact me with your training ideas.

The IFA's support for the IFRC has been continuous and is greatly appreciated by the University of Illinois and myself. The IFA also supported the Dixon Springs Agricultural Center (DSAC) by attending the DSAC planning Charrette. This "planning for the future" event included Vice President, John Gunter, who was part of the Charrette design team. Other IFA board members and officers attended the planning sessions to ensure that the IFRC was not forgotten.

IFA also supported the first ever Sustainable Living Expo at the DSAC. This event was sponsored by the Shawnee Resource Conservation and Development Area, Inc. The event brought many diverse interests to the DSAC including conservation, energy, locally grown foods & survival. IFA assisted in the conservation tent planning for the event and offered a pre-event workshop titled "Wildlife On Your Place" that featured many different wildlife and forestry professionals discussing wildlife enhancement options. The attendees of the workshop were also informed about our Association. During the Expo, the IFA hosted a main tent booth with a table display and passed out forestry information and membership applications.

In late October, the DSAC hosted the southern Illinois Prescribe Burning Association fall training event. During this event I was able to talk about the benefits of membership in the IFA and had applications and brochures available for the attendees. On a personal note, I sincerely appreciate not only the financial support, but the overall support that the IFA has provided the IFRC and me directly during these times of limited budgets.

NRCS EQIP's Illinois Landowners!

Submitted on Behalf: IFA Board of Directors

IFA would like to take this opportunity to recognize the USDA - Natural Resources Conservation Service (NRCS) for its continuous support in utilizing the Environmental Quality Incentive Program (EQIP) to provide assistance to Illinois landowners in addressing resource concerns identified among their estimated 3.9 million acres of private forest land. In 2009, Illinois ranked 3rd in the nation for the overall highest percentage of EQIP funds dedicated for Forestry. According to the American Forest Foundation 2009 Farm Bill Progress Report, Illinois provided 16.76% (\$1,896,976) of its overall EQIP funding to Illinois landowners in the establishment, planning and management implementation of their forest land. The report can be found at <http://www.forestfoundation.org>. Preliminary estimates show a similar level of success for 2010 with an additional \$1,498,436 obligated to forestry planning and implementation.

Forestry assistance through EQIP has provided management and implementation support to hundreds of existing and potential Illinois Forestry Association members throughout Illinois. EQIP has been utilized on thousands of acres in Illinois to:

- Establish long-term management programs;
- Control and eradicate invasive and exotic species;
- Address forest health and stocking through forest stand improvement practices;
- Establish and enhance forests through tree and shrub planting; and
- Address a variety of resource concerns identified by landowners and producers.

IFA Board of Directors would like to encourage all members who own or operate forestland in Illinois to assess their forest management needs and consider the opportunities EQIP provides. EQIP is a continuous sign-up process; applicants can sign up anytime of the year at their

local NRCS field office. For additional information contact your local USDA-NRCS Office and visit the Illinois NRCS web site: <http://www.il.nrcs.usda.gov/programs/eqip/index.html>

The IFA Board of Directors would like to express their sincere appreciation to Illinois NRCS State Conservationist, Bill Gradle for his continued support and efforts in providing EQIP opportunities to all Illinois forest landowners.

CWM continued from page 2

Organizing and doing a woodland inventory involves a number of steps. TIGER WC has a 100 page manual that describes the program and its use in considerable detail. The manual includes a section that describes the steps needed to do a woodland inventory and gives suggestions on how to learn more about the inventory. After studying this information and attending a half day of training with a trained forester, you should be prepared to do a basic inventory. With the help of TIGER WC, you can enter the information that you collected and analyze it.

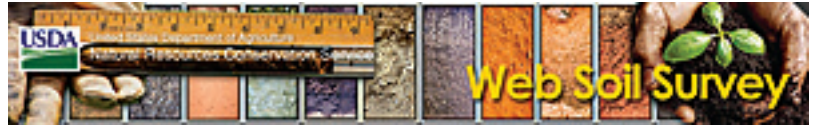
The program costs \$100 + \$6 for S & H + tax for Illinois residents. For more information about Illinois TIGER for Woodlands and Compartments, go to <http://www.cwmsoftware.com> or email to cwmsoftware@yahoo.com.

Illinois Forestry Association

A non-profit, tax-exempt organization under IRS 501(c)3

USDA's Web Soil Survey: An Essential Tool for Forest Planning and Management

By Jay C. Hayek, Extension Forester, University of Illinois



I'll admit it—I enjoy playing around with computer-based technologies and electronic gadgets. I frequently use GPS (global positioning system) for driving, recreation and forestry work; I have a field-rated handheld PC with integrated GPS that I use to collect and map forest and field data; and just recently I purchased my very first smartphone, an iPhone 4.

I won't lie to you, I'm young enough to appreciate the time-saving measures many of these new technologies provide us, but I'm also old enough to remember (I'm a Gen-X'er) that I took typing in high school (typewriter typing, not computer typing). I was a junior in college when I sent and received my first email and when I was in college, students didn't own cell phones and neither did our parents. Heck, I still shake my head in disbelief when I see my twelve nephews and nieces electronically gorge themselves on their cell phones, iPods, Nintendo DS, Xbox, PlayStation, and other electronic gadgets.

I wanted to divulge a little of my background because I want everyone who reads this article to understand that anybody, young or more seasoned in age, can use Web Soil Survey (WSS).

Web Soil Survey is a free, Web-based computer program with a pleasing, relatively straightforward graphical user interface that allows users to examine soil data in a spatial context across the landscape. Since WSS is a Web-based program, broadband Internet access is certainly preferred. Aerial photography is overlaid with detailed digital soil survey data, and a multitude of color maps and detailed reports can be created via the various suites of user options.

Like all Web-based computer programs, one must take the time to play around with the buttons and options in order to become comfortable and proficient with the outputs, maps, and reports. Worst-case scenario, have your children or grandchildren help you play around with WSS—they'll probably think it's a video game for your woodland.

Web Soil Survey is relatively straightforward and fairly intuitive. I don't want to mislead the readership, as there is a modest learning curve with using WSS. But let's be honest, there's a learning curve to working your remote control, high-definition television, and cell phone.



Web Soil Survey was not developed solely for natural resource professionals, soil scientists, and engineers. Students, homeowners, farmers and landowners can use this tool with

relative ease and efficiency. Kudos to the USDA Natural Resources Conservation Service (NRCS) for developing such a wonderful and extremely useful tool that anyone and everyone can use.

Being a forester, I routinely use WSS to create detailed soil maps for tree planting and forest management purposes. I even force my students at U of I to use WSS whenever we go out to the field—it's very useful for planning field reconnaissance, delineating stand boundaries, identifying unique habitats, and understanding soil/plant interactions (i.e., edaphics).

Landowners wishing to plant trees on their property are strongly encouraged to use WSS in order to properly match tree species with suitable soil types. I am frequently contacted by landowners who ask, "What kind of trees should I plant on my property?" I invariably respond, "What are your soil types as it is extremely

important that you match tree species with soil type." I then follow up my response with a standard recommendation, "Please visit your county NRCS office and politely ask them to provide you with a detailed soil map of your property."

Now, thanks to WSS, landowners can accomplish this simple task in the comfort of their own home. A good old fashion hardcopy soil survey can also do the trick, but WSS is a lot fancier and certainly a lot more fun and useful with regard to tree planting and other forest management activities.

Here are the common options I choose when using WSS when teaching and analyzing a property for forest management purposes:

- soil mapping units;
- soil fertility and pH;
- soil texture;
- drainage class;
- depth to water table;
- slope and erosion;
- parent material and geology;
- flood frequency and flood duration;
- forestland productivity (volume yields);
- forest site index;
- black walnut suitability;
- etc.

Simply put, "If you use email, Google, and YouTube, then you most certainly can navigate Web Soil Survey!" Give it a try, as you'll be surprised just how fun and rewarding this Web resource can be!

Web Soil Survey Internet Resources:

Web Soil Survey:

<http://websoilsurvey.nrcs.usda.gov/app/HomePage.htm>

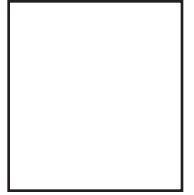
Web Soil Survey Brochure:

ftp://ftp-fc.sc.egov.usda.gov/NSSC/pub/WSS_brochure.pdf

Using Web Soil Survey:

http://websoilsurvey.nrcs.usda.gov/app/Help/WSS_HomePage_HowTo.pdf

Illinois Forestry Association
P.O. 224
Chatham, IL 62629-0224



IFA - To act on issues that impact rural and community forests and to promote forestry in Illinois
